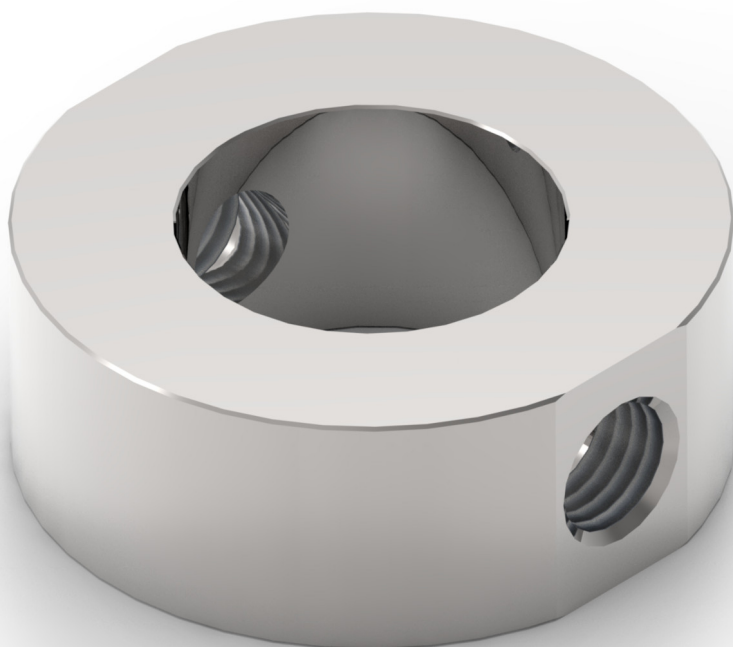

DRIP RING



ITE.
INDUSTRIAL TECHNICAL EQUIPMENT

INTRODUCTION



I.T.E. is an Italian company established in 1998 from the merge between 2 companies, one specialized in trading and one in machining activities, both operating in the Oil & Gas field since 1980. I.T.E. is one of the largest Italian and European manufacturers of valves and fittings for the installation of industrial instruments, mainly in O&G and Energy sectors, with a huge production of: **Needle Valves, Instrument Manifolds, Ball Valves, Pots & Siphons, Compression Fittings, Check Valves, Forged Globe Neele Valves, Adapters/Fittings, Fire Sensors, Sampling Systems, Protection Boxes.**

I.T.E. is specialized also on tailor-made solutions, on request complete packages can be provided to meet customer's needs.

I.T.E. is a flexible and customer oriented company, the manufacturing plant is equipped with different CNC machines, automatic welding machines and an automatic warehouse with different semi-finished standard products, this structure allows us to be reliable partner with a fast response to the customer needs.

I.T.E. products are 100% engineered, manufactured, assembled and tested in Italy, all the products have the traceability system so that we are able to provide the best assistance to customers also specially during maintenance activities providing the right product/component.



FAILURE, IMPROPER SELECTION OR IMPROPER USE OF THE PRODUCTS AND/OR SYSTEMS DESCRIBED HEREIN OR RELATED ITEMS CAN CAUSE DEATH, PERSONAL INJURY AND PROPERTY DAMAGE.

This document and other information from I.T.E. s.r.l., its authorized distributors provide product and/or system options for further investigation by users having technical expertise. It is important that you analyze all aspects of your application and review the information concerning the product or system in the current product catalog. Due to the variety of operating conditions and applications for these products or systems, the user, through its own analysis and testing, is solely responsible for making the final selection of the products and systems and assuring that all performance, safety and warning requirements of the application are met. The products described herein, including without limitation, product features, specifications, designs, availability and pricing, are subject to change by I.T.E. s.r.l. and its subsidiaries at any time without notice.

CONTENTS

FEATURES

PAGE 06

CONNECTIONS

PAGE 07

ADRF - DRIP RING

PAGE 08



FEATURES

Across years of experience in instrumentation sector and increasing its know-how, today I.T.E. is able to offer a wide range of Drip Ring and accessories for several application and sector. The Drip Ring is a key component used in high-pressure piping systems, especially in the Oil & Gas industry. It is installed between two flanges and allows for early leak detection by enabling fluid drainage or visual inspection, thereby increasing plant safety and simplifying preventive maintenance.

STANDARD FEATURES

Flange compatibility:

ANSI B16.5 (½" to 24"), API 6A DIN EN 1092-1
Available for RTJ, RF, and FF flanges

Pressure rating:

Up to Class 2500 (for ANSI B16.5 flanges only).
Pressure rating depends on flange standard and project specifications.
Custom pressure ratings available upon request.

Connection options:

Threaded or custom fittings upon request

Wetted parts according to **NACE**

MR.0175/MR.0103 as standard.

Certificate 3.1 certificate according to EN 10 204
on valve body material.

MATERIAL

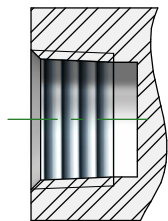
| MATERIAL GROUP | I.T.E. DESIGNATION | ASTM | UNS | AVAILABILITY ON STOCK |
|--------------------------|--------------------|----------|--------|-----------------------|
| Stainless Steel | 316/316L | 316/316L | S31600 | YES |
| | 6Mo | | N08367 | ON REQUEST |
| Ferritic Stainless Steel | Duplex | F51 | S31803 | YES |
| | Superduplex | F55 | S32750 | YES |
| Carbon Steel | LF2 | LF2 | | ON REQUEST |
| | A105 | A105 | | ON REQUEST |
| Alloy | Alloy 400 | | N04400 | YES |
| | Alloy C276 | | N10276 | ON REQUEST |
| | Alloy 625 | | N06625 | ON REQUEST |
| | Alloy 825 | | N08825 | ON REQUEST |
| Titanium | Ti Gr.2 | | R50400 | ON REQUEST |



CONNECTIONS

I.T.E. manufactures a lot of different connections and combinations. Below are some of the most used. If you don't find your option please contact us.

TAPERED PIPE THREADS

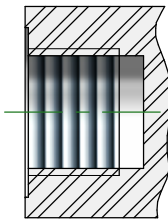


Female

NPT threads acc. to.
ASME B 1.20.1

BSPT threads acc. to.
ISO 7/1

PARALLEL PIPE THREADS (1) (2)



Female

BSPP threads acc. to.
ISO 228-1
ISO 1179-1

Metric threads acc. to.
ISO 261

NOTE

(1) Cylindrical connection for fittings hydraulic or gas applications. The seal between male and female is made by metal to metal contact between two parallel surfaces.

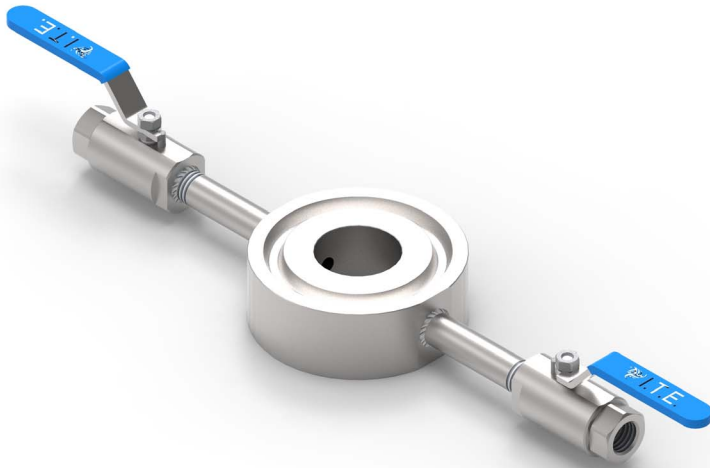
(2) Pressure connection for use with pressure gauges. The end can be fixed or rotatable according to the needs of use. The seal is carried out by means of a flat gasket placed at the bottom of the female thread.

Size from 1/8" to 1"
Metric size: M20 x 1.5



ADRF

The Drip Ring is a compact and effective solution for passive leak detection in flanged piping systems. Positioned between two standard flanges, it allows for safe fluid collection or inspection in the event of gasket failure or micro-leakage. Built from corrosion-resistant materials, the Drip Ring enhances safety in critical Oil & Gas applications without altering the existing pipeline structure.

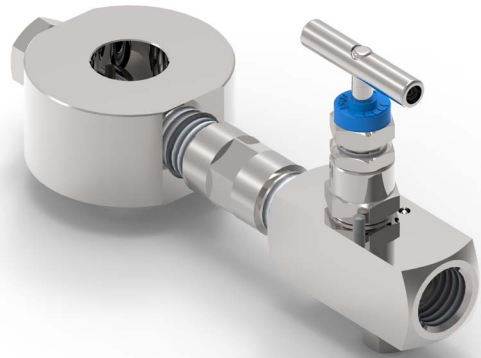


BENEFITS

- Enables early detection and containment of fluid leaks
- Quick installation without plant modifications
- Resistant to corrosive and extreme environments
- Custom-made to match specific plant requirements

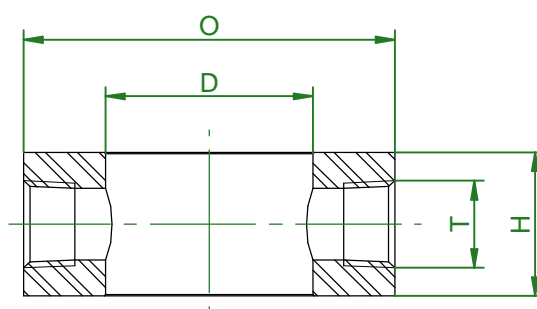
TYPICAL APPLICATIONS

- Chemical injection lines
- High-pressure processing units
- Valve blocks and manifolds
- Offshore platforms and onshore stations
- Refineries and petrochemical facilities



The dimensions of Drip Rings built to ANSI B16.5 standards ensure seamless fit and interchangeability across various flange pressure classes. The table below lists nominal diameter (DN), bolt hole pattern, ring thickness, and side-port location, providing all the key measurements you need to select the correct Drip Ring for your piping system.

ASME B16.5 FLANGED



The standard thread is NPT. Other thread types are available upon request on one or both sides.

| DIMENSION RF-FF | | | | |
|-----------------|--------|-------|-------|----|
| DN | RATING | O | D | H |
| 1/2" | 150 | 44,5 | 15,8 | 38 |
| 3/4" | | 54 | 21 | |
| 1" | | 63,5 | 26,6 | |
| 1"-1/2" | | 82,5 | 40,9 | |
| 2" | | 101,5 | 54,8 | |
| 3" | | 133,5 | 82,8 | |
| 4" | | 171,5 | 108,2 | |

| DIMENSION RF-FF | | | | |
|-----------------|-----------|-----------|-------|----|
| DN | RATING | O | D | H |
| 1/2" | 300 - 600 | 51 | 15,8 | 38 |
| 3/4" | | 63,5 | 21 | |
| 1" | | 70 | 26,6 | |
| 1"-1/2" | | 92 | 40,9 | |
| 2" | | 108 | 54,8 | |
| 3" | | 146 | 82,8 | |
| 4" | | 178 / 190 | 108,2 | |

| DIMENSION RF-FF | | | | |
|-----------------|----------|-----------|-------|----|
| DN | RATING | O | D | H |
| 1/2" | 900-1500 | 60,8 | 15,8 | 38 |
| 3/4" | | 66,5 | 21 | |
| 1" | | 76 | 26,6 | |
| 1"-1/2" | | 95 | 40,9 | |
| 2" | | 139,5 | 54,8 | |
| 3" | | 165/171,5 | 82,8 | |
| 4" | | 203 / 206 | 108,2 | |

| DIMENSION RF-FF | | | | |
|-----------------|--------|-------|-------|----|
| DN | RATING | O | D | H |
| 1/2" | 2500 | 66,5 | 15,8 | 38 |
| 3/4" | | 73 | 21 | |
| 1" | | 82,5 | 26,6 | |
| 1"-1/2" | | 114,5 | 40,9 | |
| 2" | | 143 | 54,8 | |
| 3" | | 193,5 | 82,8 | |
| 4" | | 232 | 108,2 | |

For the dimensions of the Ring Joint, API, or UNI versions, please contact our technical department.



DRIP RING ANSI - HOW TO ORDER

| | | | | A | D | R | J | - | 8 | 0 | 3 | 8 | S | S | - | A | 1 | C | 2 | E | 1 |
|--------------|---|---------|--|---|---|---|---|---|---|---|---|---|---|---|---|---|---|---|---|---|---|
| MODEL | | | | | | | | | | | | | | | | | | | | | |
| ADRF | DRIP RING - RAISED FACE (SMOOTH FINISH) | | | | | | | | | | | | | | | | | | | | |
| ADRJ | DRIP RING - RING JOINT | | | | | | | | | | | | | | | | | | | | |
| DN FLANGE | | | | | | | | | | | | | | | | | | | | | |
| 8 | 1/2" | (DN 15) | | | | | | | | | | | | | | | | | | | |
| 12 | 3/4" | (DN 20) | | | | | | | | | | | | | | | | | | | |
| 16 | 1" | (DN 25) | | | | | | | | | | | | | | | | | | | |
| 24 | 1-1/2" | (DN 40) | | | | | | | | | | | | | | | | | | | |
| 32 | 2" | (DN 50) | | | | | | | | | | | | | | | | | | | |
| 48 | 3" | (DN 80) | | | | | | | | | | | | | | | | | | | |
| RATING | | | | | | | | | | | | | | | | | | | | | |
| 01 | ANSI 150 | | | | | | | | | | | | | | | | | | | | |
| 03 | ANSI 300 | | | | | | | | | | | | | | | | | | | | |
| 06 | ANSI 600 | | | | | | | | | | | | | | | | | | | | |
| 09 | ANSI 900 | | | | | | | | | | | | | | | | | | | | |
| 15 | ANSI 1500 | | | | | | | | | | | | | | | | | | | | |
| 25 | ANSI 2500 | | | | | | | | | | | | | | | | | | | | |
| OUT (2x STD) | | | | | | | | | | | | | | | | | | | | | |
| 4 | 1/4" | | | | | | | | | | | | | | | | | | | | |
| 8 | 1/2" | | | | | | | | | | | | | | | | | | | | |
| 12 | 3/4" | | | | | | | | | | | | | | | | | | | | |
| THREAD | | | | | | | | | | | | | | | | | | | | | |
| I | BSPP GAS (ISO 1179) | | | | | | | | | | | | | | | | | | | | |
| N | NPT | | | | | | | | | | | | | | | | | | | | |
| S | SOCKET WELD | | | | | | | | | | | | | | | | | | | | |
| MATERIAL | | | | | | | | | | | | | | | | | | | | | |
| S | AISI 316L | | | | | | | | | | | | | | | | | | | | |
| A | ASTMA105 | | | | | | | | | | | | | | | | | | | | |
| D | DUPLEX F51 | | | | | | | | | | | | | | | | | | | | |
| E | SUPERDUPLEX F55 | | | | | | | | | | | | | | | | | | | | |
| F | ALLOY 400 | | | | | | | | | | | | | | | | | | | | |
| G | ALLOY C276 | | | | | | | | | | | | | | | | | | | | |
| H | 6 MO/F44 | | | | | | | | | | | | | | | | | | | | |
| I | ALLOY 625 | | | | | | | | | | | | | | | | | | | | |
| L | AISI 321 | | | | | | | | | | | | | | | | | | | | |
| M | AISI 316Ti | | | | | | | | | | | | | | | | | | | | |
| ACCESSORIES | | | | | | | | | | | | | | | | | | | | | |
| A1 | NIPPLES BW X NPT 100MM | | | | | | | | | | | | | | | | | | | | |
| A2 | NIPPLES BW X NPT 150MM | | | | | | | | | | | | | | | | | | | | |
| A3 | NIPPLES BW X NPT 200MM | | | | | | | | | | | | | | | | | | | | |
| A4 | NIPPLES BW X NPT 250MM | | | | | | | | | | | | | | | | | | | | |
| A5 | NIPPLES BW X NPT 300MM | | | | | | | | | | | | | | | | | | | | |
| B1 | NIPPLES NPT X NPT 100MM | | | | | | | | | | | | | | | | | | | | |
| B2 | NIPPLES NPT X NPT 150MM | | | | | | | | | | | | | | | | | | | | |
| B3 | NIPPLES NPT X NPT 200MM | | | | | | | | | | | | | | | | | | | | |
| B4 | NIPPLES NPT X NPT 250MM | | | | | | | | | | | | | | | | | | | | |
| B5 | NIPPLES NPT X NPT 300MM | | | | | | | | | | | | | | | | | | | | |
| C1 | BALL VALVE M/F BVSB PEEK | | | | | | | | | | | | | | | | | | | | |
| C2 | BALL VALVE F/F BVSB PEEK | | | | | | | | | | | | | | | | | | | | |
| C3 | BALL VALVE M/M BVSB PEEK | | | | | | | | | | | | | | | | | | | | |
| D1 | BALL VALVE M/F B2C PEEK | | | | | | | | | | | | | | | | | | | | |
| D2 | BALL VALVE F/F B2C PEEK | | | | | | | | | | | | | | | | | | | | |
| D3 | BALL VALVE M/M B2C PEEK | | | | | | | | | | | | | | | | | | | | |
| E1 | PLUG | | | | | | | | | | | | | | | | | | | | |
| E2 | NO CONNECTION THREADED HOLE | | | | | | | | | | | | | | | | | | | | |
| E3 | ONE CONNECTION THREADED HOLE | | | | | | | | | | | | | | | | | | | | |
| F1 | BALL VALVE M/F BVS PTFE | | | | | | | | | | | | | | | | | | | | |
| F2 | BALL VALVE F/F BVS PTFE | | | | | | | | | | | | | | | | | | | | |
| F3 | BALL VALVE M/M BVS PTFE | | | | | | | | | | | | | | | | | | | | |



DRIP RING UNI EN 1092-1 - HOW TO ORDER

| | | A | D | R | E | D | 2 | 0 | P | 1 | 6 | 8 | S | S | A | 1 | C | 2 | E |
|---------------------|------------------------------|---|---|---|---|---|---|---|---|---|---|---|---|---|---|---|---|---|---|
| MODEL | | | | | | | | | | | | | | | | | | | |
| ADRB | DRIP RING "TYPE B" SURFACE | | | | | | | | | | | | | | | | | | |
| ADRD | DRIP RING "TYPE D" SURFACE | | | | | | | | | | | | | | | | | | |
| DN FLANGE | | | | | | | | | | | | | | | | | | | |
| D15 | DN15 | | | | | | | | | | | | | | | | | | |
| D20 | DN20 | | | | | | | | | | | | | | | | | | |
| D25 | DN25 | | | | | | | | | | | | | | | | | | |
| D32 | DN32 | | | | | | | | | | | | | | | | | | |
| D40 | DN40 | | | | | | | | | | | | | | | | | | |
| D50 | DN50 | | | | | | | | | | | | | | | | | | |
| D65 | DN65 | | | | | | | | | | | | | | | | | | |
| RATING | | | | | | | | | | | | | | | | | | | |
| P10 | PN10 | | | | | | | | | | | | | | | | | | |
| P16 | PN16 | | | | | | | | | | | | | | | | | | |
| P40 | PN40 | | | | | | | | | | | | | | | | | | |
| OUT (2x STD) | | | | | | | | | | | | | | | | | | | |
| 4 | 1/4" | | | | | | | | | | | | | | | | | | |
| 8 | 1/2" | | | | | | | | | | | | | | | | | | |
| 12 | 3/4" | | | | | | | | | | | | | | | | | | |
| THREAD | | | | | | | | | | | | | | | | | | | |
| I | BSPP GAS (ISO 1179) | | | | | | | | | | | | | | | | | | |
| N | NPT | | | | | | | | | | | | | | | | | | |
| S | SOCKET WELD | | | | | | | | | | | | | | | | | | |
| MATERIAL | | | | | | | | | | | | | | | | | | | |
| S | AISI 316L | | | | | | | | | | | | | | | | | | |
| A | ASTMA105 | | | | | | | | | | | | | | | | | | |
| D | DUPLEX F51 | | | | | | | | | | | | | | | | | | |
| E | SUPERDUPLEX F55 | | | | | | | | | | | | | | | | | | |
| F | ALLOY 400 | | | | | | | | | | | | | | | | | | |
| G | ALLOY C276 | | | | | | | | | | | | | | | | | | |
| H | 6 Mo/F44 | | | | | | | | | | | | | | | | | | |
| I | ALLOY 625 | | | | | | | | | | | | | | | | | | |
| L | AISI 321 | | | | | | | | | | | | | | | | | | |
| M | AISI 316Ti | | | | | | | | | | | | | | | | | | |
| ACCESSORIES | | | | | | | | | | | | | | | | | | | |
| A1 | NIPPLES BW X NPT 100MM | | | | | | | | | | | | | | | | | | |
| A2 | NIPPLES BW X NPT 150MM | | | | | | | | | | | | | | | | | | |
| A3 | NIPPLES BW X NPT 200MM | | | | | | | | | | | | | | | | | | |
| A4 | NIPPLES BW X NPT 250MM | | | | | | | | | | | | | | | | | | |
| A5 | NIPPLES BW X NPT 300MM | | | | | | | | | | | | | | | | | | |
| B1 | NIPPLES NPT X NPT 100MM | | | | | | | | | | | | | | | | | | |
| B2 | NIPPLES NPT X NPT 150MM | | | | | | | | | | | | | | | | | | |
| B3 | NIPPLES NPT X NPT 200MM | | | | | | | | | | | | | | | | | | |
| B4 | NIPPLES NPT X NPT 250MM | | | | | | | | | | | | | | | | | | |
| B5 | NIPPLES NPT X NPT 300MM | | | | | | | | | | | | | | | | | | |
| C1 | BALL VALVE M/F BVS B PEEK | | | | | | | | | | | | | | | | | | |
| C2 | BALL VALVE F/F BVS B PEEK | | | | | | | | | | | | | | | | | | |
| C3 | BALL VALVE M/M BVS B PEEK | | | | | | | | | | | | | | | | | | |
| D1 | BALL VALVE M/F B2C PEEK | | | | | | | | | | | | | | | | | | |
| D2 | BALL VALVE F/F B2C PEEK | | | | | | | | | | | | | | | | | | |
| D3 | BALL VALVE M/M B2C PEEK | | | | | | | | | | | | | | | | | | |
| E1 | PLUG | | | | | | | | | | | | | | | | | | |
| E2 | NO CONNECTION THREADED HOLE | | | | | | | | | | | | | | | | | | |
| E3 | ONE CONNECTION THREADED HOLE | | | | | | | | | | | | | | | | | | |
| F1 | BALL VALVE M/F BVS PTFE | | | | | | | | | | | | | | | | | | |
| F2 | BALL VALVE F/F BVS PTFE | | | | | | | | | | | | | | | | | | |
| F3 | BALL VALVE M/M BVS PTFE | | | | | | | | | | | | | | | | | | |





I.T.E. s.r.l.
Business location:
Via per Civesio 23
20097 San Donato Milanese (MI)
Ph. +39 0371 871077
Fax: +39 0371 87795

Production site:
Zona Industriale 1a Strada 17
30030 Fossò (VE)
Ph: +39 041 5170351
Fax: +39 041 5179385

info@ite-srl.com
www.ite-srl.com